

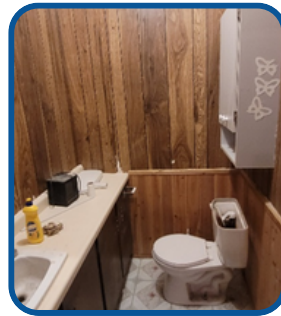


29B ELORA ST,
CLIFFORD

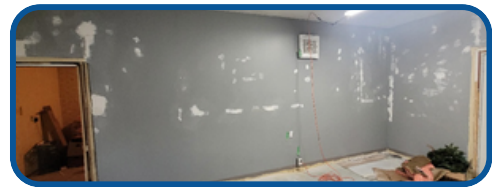
FROM POTENTIAL TO
PICTURE PERFECT

This building has been fully transformed with support from the Town of Minto's Facade & Interior Improvement Grants and the County of Wellington Invest Well Grant.

What was once a tired space is now a refreshed, modern commercial opportunity, and available for lease! UPDATE: Property has been leased.



BEFORE



AFTER



"Grants from both the Town of Minto and Wellington County allowed us to significantly upgrade the intended facade overhaul at 29B Elora St. in downtown Clifford. Top quality material that looks great & will last for decades has become a budget reality for us. The results speak for themselves...a beautiful exterior that enhances the downtown core is enjoyed by residents and travelers alike. Additionally, the elevated beauty will enable us to attract a top tier tenant who considers portraying the proper image a prime criteria, in turn contributing to the economic activity of the downtown core."

SEAN LEMAY
PROPERTY OWNER

